

KALCRET®-S Sprayable Hard Compound

Sprayable Abrasion Resistant Lining for Large Surfaces, Installs Quickly, Even Overhead

New spray system applies abrasion resistant KALCRET®-S wear compound to large surfaces quickly and reliably, in a uniform, compact layer, free of joints. KALCRET®-S significantly reduces wear and abrasion on system components and pipes in many industries including cement, power, glass, iron/steel, mining, and refuse incineration.



KALCRET®-S hard compound is a mixture of hard aggregate materials ranging in size from 0-4 mm and consisting of bauxite or corundum (depending on application), cement binder and micro silica. Defined amounts of steel fibers add structural strength. Watch the video.

- Spray system delivers a continuous, uniform layer.
- Spray horizontally or vertically to achieve a joint free lining.
- Surface can be smoothed immediately after spraying.
- No sandblasting required before application.
- Fast application rate > 5m²/Hr. (54 sq. ft./Hr.)
- 24 hour setting time.
- Use at temperatures up to 1200°C (2192°F).
- Excellent thermal shock resistance and oxidation stability.
- Thicknesses range from 20 to 100mm (.78" to 3.93"), depending on severity of wear.
- Use wire mesh or anchors for mechanical attachment.

Provides Fast, Reliable Wear Protection for Separators, Cyclones, Ductwork and Dust Collectors

- Spray system especially developed for installing KALCRET®-S
- Continuous and homogeneous delivery of the KALCRET®-S compound to the spray nozzle
- High-pressure water dosing and injection developed for KALCRET®-S to achieve optimal wetting
- Spraying system made available in installation container

Preparing the job

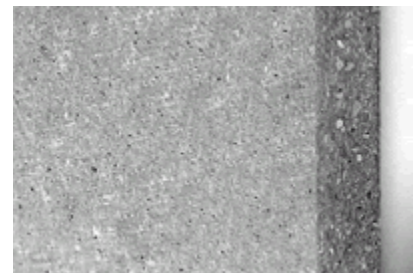
- Working temperatures between 5 and 30°C (40 and 90°F)
- Steel surfaces shall be mechanically cleaned
- Concrete surfaces shall be free of oil, laitance and loose particles

Working of KALCRET®-S

- Conveying distance of spraying compound longer than 50 m/160' from the spraying machine
- Particularly suitable for complicated geometries and large surfaces
- Heating-up curves shall be duly observed
- Material spillage approx. 20%
- 75% of final strength reached as early as 24 hours after installation
- Working distance 800 to 1200 mm/32"-48"



KALCRET®-S spray system



Homogenous structure