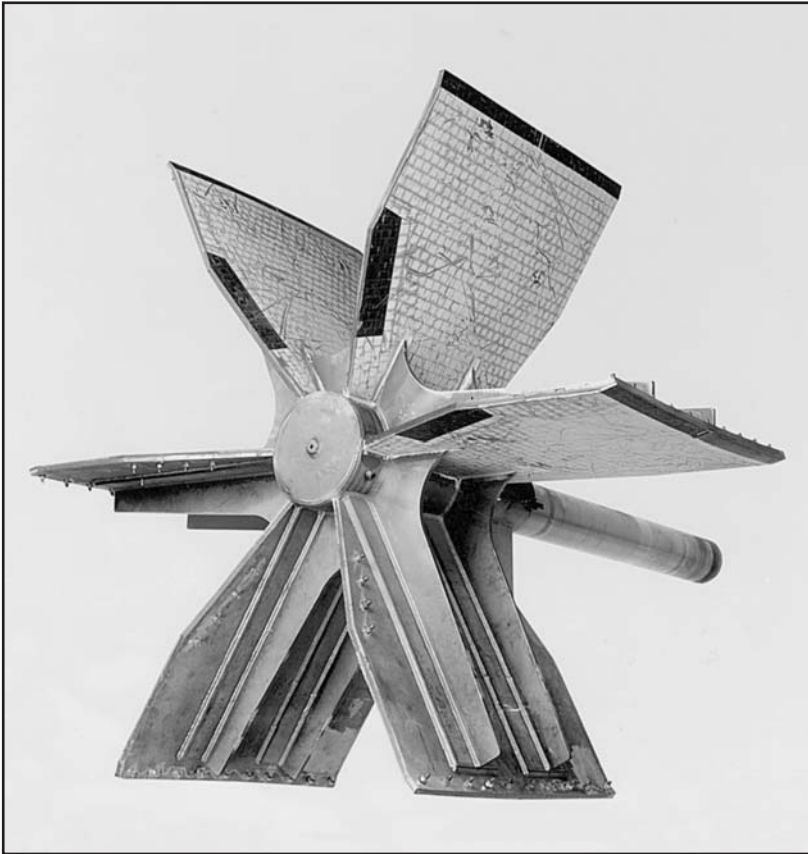


KALBOND High-Strength Bonding System

**Extend the Life of Moving Parts
Exposed to Abrasion and Impact**



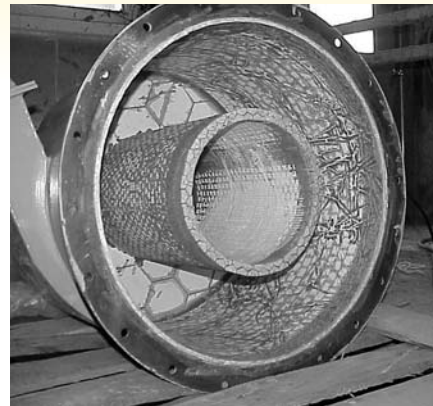
- Bonds ALRESIST® ceramic or KALMETALL®-TC tungsten carbide linings.
- Use with ALRESIST tiles as thin as 1/32" (.8 mm).
- Permits use of small tile sizes for curved surfaces, complex shapes.
- Effective on cyclone classifiers, fan blades, and rotors.
- Applications up to 135°C/275°F.
- Apply to existing or new components.
- ALRESIST is custom engineered for specific applications.

KALBOND
High-strength bonding system

KALBOND High-Strength Bonding System

**Provides Superior Bonding
and Extreme Impact Resistance**

The KALBOND high performance adhesive system provides superior bonding of wear-resistant, engineered ALRESIST® ceramic or KALMETALL®-TC tungsten carbide tiles. Extremely impact resistant, KALBOND allows tiles as thin as 1/32" (.8 mm) to be used on curved surfaces and shapes that are typically hard to protect. Problem components in dynamic situations such as classifier rotors, fan blades, screw augers and other complex shapes can be lined with ALRESIST and/or KALMETALL®-TC to outlast welded overlays and hardened metallic linings.



Applications:

- PF damper
- Muller rotor
- Potash screw
- Mixer arms
- Coal auger flighting
- Fan blades
- Large diameter fans
- Curved surfaces
- Grain screw flighting
- Dust rotor
- Complex shapes
- Much more



Abresist Corporation

5541 North State Road 13, Urbana, IN 46990

Toll Free: **800-348-0717** • Fax: 888-348-0717

www.abresist.com • E-mail: info@abresist.com