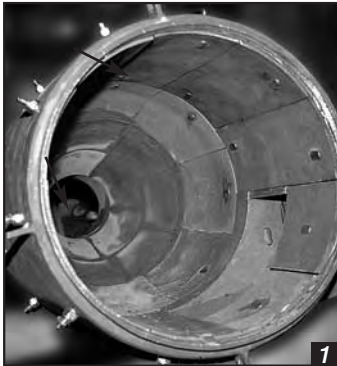


KALMETALL®-C Hard Casting

**Ideal Solution for Impact
and Sliding Abrasion**

KALMETALL®-C

Hard Casting



1



3



2

1. Cyclone used in a soil decontamination system
2. Components made of KALMETALL-C hard casting are offered in various alloys
3. Paddles made of KALMETALL-C 153 installed in a gravel washing unit

KALMETALL®-C is a family of hard castings with a range of wear resistant properties. The linings are tailored to handle the specific combination of impact wear and sliding abrasion for each application.

- Variety of alloys available
- Can be used up to temperatures of 350°C/662°F
- Standard dimension up to 300 mm x 300 mm
- High impact resistance combined with good abrasion resistance or
- High abrasion resistance combined with good impact resistance
- Cylindrical linings from 40mm to 800mm diameter
- Complicated geometrical shapes feasible
- Wall thickness between 15 mm and 70 mm

KALMETALL®-C Hard Casting

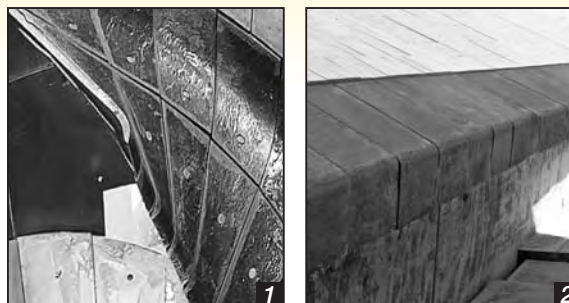
KALMETALL®-C is the Optimal Problem Solution for a Wide Range of Applications

Abresist Corporation can:

- Apply KALMETALL®-C to existing components
- Incorporate linings in new re-engineered parts
- Supply complete fabrication

KALMETALL®-C is ideal for:

- Floors of concrete mixers
- Pump housings
- Linings for roller mills
- Mixer blades
- Mill linings
- Chute linings, straight and spiral



1. Shaft spiral used for hard coal mining and fitted with time-tested KALMETALL®-C lining
 2. A coke ramp protected by KALMETALL®-C in combination with silicon carbide ceramics KALSICA® and hard ceramics KALCERAM®-K

| KALMETALL®-C Properties | | | | | | | | | |
|-------------------------|--------------------------|----|----|----|----|-------------|------------------------------|-------------------|--------|
| KALMETALL | Chemical Composition in% | | | | | Hardness HV | Max. application-temp. °C/°F | Resistant Against | |
| | C | CR | Mo | Mn | Fe | | | abrasion | impact |
| C 101 | 1.2 | — | — | 13 | 82 | 580* | 300/572 | x | xx |
| C 153 | 3 | 16 | 1 | — | 78 | 620 | 350/662 | xx | x |
| C 155 | 3 | 20 | 2 | — | 70 | 700 | 350/662 | xxx | x |

**work-hardened*

Fastening systems for KALMETALL-C
 The standard fastening systems for KALMETALL-C are of mechanical type. These include threaded conical screws made of KALMETALL-C. The cast shaped elements may also be installed with the aid of adhesives based on resin or minerals as well as by means of heat and acid-resistant cements.

Call on Abresist Corporation for help handling:

- Bottom and fly ash
- Ore
- Coal/coke
- Iron oxide
- Dried sewage fertilizer
- Cement/clinker
- Grain
- Carbon
- Limestone
- Sand
- Glass/cullet
- Hog fuel/woodchips
- Fastening Systems



Abresist Corporation

5541 North State Road 13, Urbana, IN 46990
 Toll Free: **800-348-0717** • Fax: 888-348-0717
www.abresist.com • E-mail: info@abresist.com